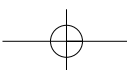




# SWITCHES AND CONTROLS

## CONTENTS

CONTROL UNITS .....	Page 116
SWITCH DISCONNECTORS & CAM SWITCHES .....	Page 128
EMERGENCY STOP MAIN SWITCHES .....	Page 130
MAIN SWITCHES.....	Page 131
CAM SWITCHES FOR PANEL MOUNTING .....	Page 132
CAM SWITCHES FOR DIN RAIL .....	Page 135



# CONTROL UNITS

## CONTROL UNITS

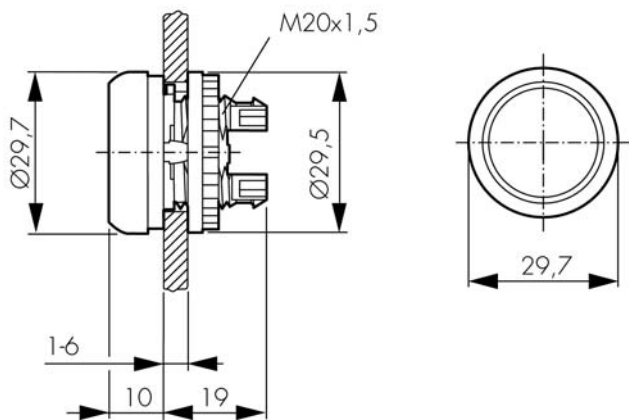


CONTROL UNITS

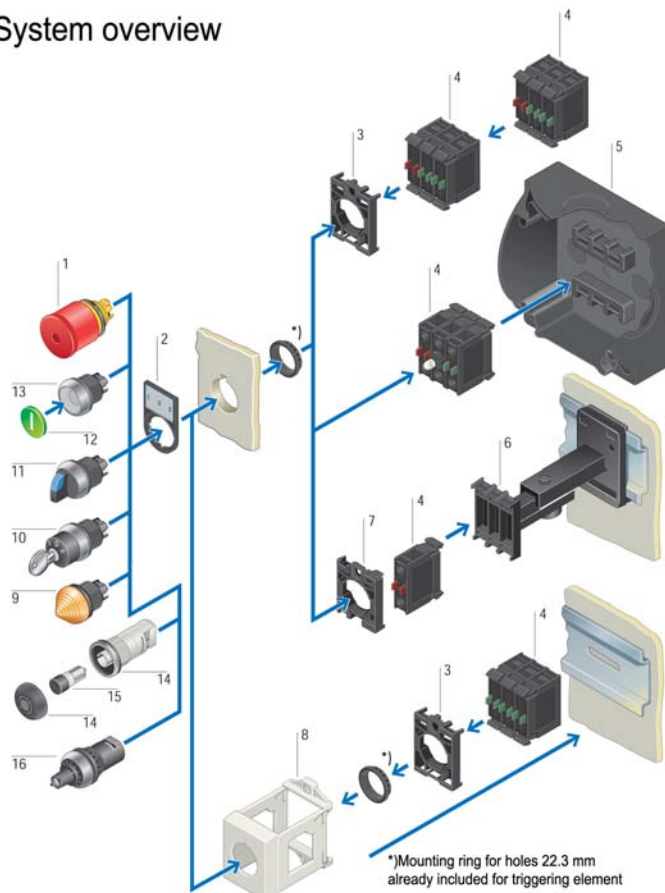
### SCHRACK-INFO

- Integrated LED technology
  - 100,000 h service life
  - 3 LEDs for 5 colours
- Cage clamp terminals for contact and LED elements
- Degree of protection:
  - IP 67/69 K for pushbuttons and illuminated pushbuttons and indicator lights, emergency stop buttons, mushroom buttons
  - IP 66 for two-button stations, Selector and key-operated switches
- Laser labeling
  - Abrasion proof
  - Database (1000 symbols)
  - Customer-specific symbols fitted to size
  - Customizable text
    - 3 mm letter height, space for 3 rows
      1. 8 characters
      2. 10 characters
      3. 8 characters
    - 5mm letter height and one row with 5 characters
  - Programmable latching and momentary function
  - Diameter 22,5 mm

### Triggering and signalling indicators



### System overview



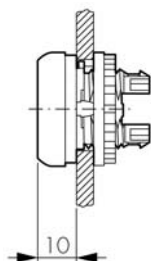
- 1 Emergency stop buttons
- 2 Label holder
- 3 Adapter
- 4 Contact elements
- 5 Encapsulation
- 6 Telescopic clip
- 7 Centering adapter
- 8 Top-hat adapter
- 9 Indicator light
- 10 Key-buttons
- 11 Option buttons
- 12 Plates/Lenses
- 13 Pushbuttons
- 14 Acoustic indicator
- 15 Sommer
- 16 Potentiometer

## CONTROL UNITS

## PUSHBUTTONS



MM216605



## SCHRACK-INFO

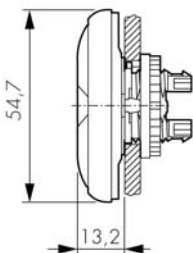
- IP 67, 69K
- Diameter 22,5 mm

DESCRIPTION	ORDER NO.
<b>SPRING – RETURN</b>	
Spring – return, black	MM216590
Spring – return, white	MM216592
Spring – return, red	MM216594
Spring – return, green	MM216596
Spring – return, yellow	MM216598
Spring – return, blue	MM216600
Spring – return, red "0"	MM216605
Spring – return, green "1"	MM216607
Spring – return, w/o plate	MM216602
<b>STAY – PUT</b>	
Stay – put, black	MM216613
Stay – put, red	MM216617
Stay – put, green	MM216619
<b>PLATES FOR FLAT PUSHBUTTONS</b>	
Plate for pushbuttons, black "arrow"	MM218173

## DOUBLE-PUSHBUTTONS WITH INDICATOR LENS



MM216700



## SCHRACK-INFO

- With indicator light central light attachment, white
- LED can also be refitted later
- IP 66
- Diameter 22,5 mm

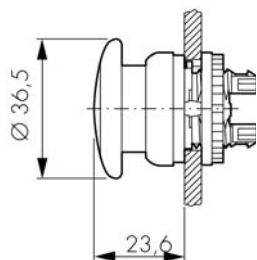
DESCRIPTION	ORDER NO.
Spring – return, illuminated, green/red	MM216698
Spring – return, illuminated, green/red "1/0"	MM216700
Spring – return, illuminated, green/red, "start/stop"	MM216702
Spring – return, illuminated, white/black	MM216704
Spring – return, illuminated, white/red, "1/0"	MM216706
Spring – return, illuminated, black/black, arrows	MM216710

# CONTROL UNITS

## MUSHROOM PUSHBUTTONS



MM216714



### SCHRACK-INFO

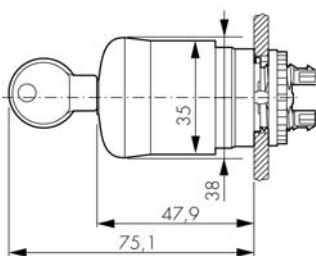
- IP 67, 69K
- Diameter 22,5 mm

DESCRIPTION	ORDER NO.
<b>SPRING – RETURN</b>	
Spring – return, black	MM216712
Spring – return, red	MM216714
Spring – return, green	MM216716
<b>STAY – PUT</b>	
Stay – put, black	MM216743
Stay – put, red	MM216745
<b>PLATE FOR MUSHROOM BUTTON</b>	
Plate, mushroom button f. red	MM216437

## EMERGENCY STOP BUTTONS



MM216878



### SCHRACK-INFO

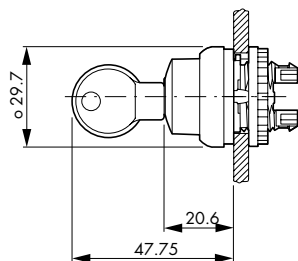
- IP 67, IP 69K
- Tamper-proof in accordance with EN418
- Pull to reset
- Diameter 22,5 mm

DESCRIPTION	ORDER NO.
Emergency stop button	MM216876
Emergency stop button, illuminated	MM216878
Emergency stop key-operated button	MM216879

## KEY-OPERATED BUTTONS



MM216900



### SCHRACK-INFO

- IP 66
- Diameter 22,5 mm

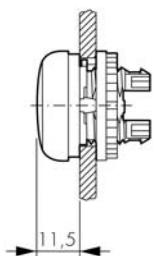
DESCRIPTION	ORDER NO.
2 positions, spring – return, 40°	MM216881
2 positions, stay – put, 60°	MM216887
3 positions, spring – return, 40°	MM216894
3 positions, stay – put, 60°	MM216900
Key, MS1 standard	MM216416

# CONTROL UNITS

## INDICATOR LIGHT, FLUSH



MM216771



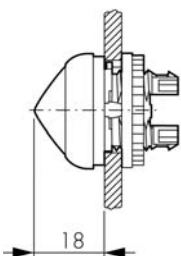
- SCHRACK-INFO**
- IP 67, 69K
  - Diameter 22,5 mm
  - LED technology

DESCRIPTION	ORDER NO.
Flush, white	MM216771
Flush, red	MM216772
Flush, green	MM216773
Flush, yellow	MM216774
Flush, blue	MM216775
Flush, empty	MM216776

## INDICATOR LIGHT, CONICAL



MM216779



- SCHRACK-INFO**
- IP 67, 69K
  - Diameter 22,5 mm
  - LED technology

DESCRIPTION	ORDER NO.
Conical, white	MM216778
Conical, red	MM216779
Conical, green	MM216780
Conical, yellow	MM216781
Conical, blue	MM216782

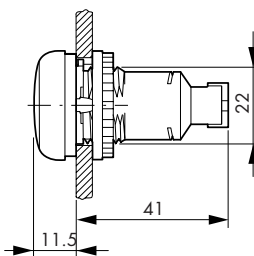
## ACOUSTIC INDICATOR IP 40



MM216913



MM21691F



- SCHRACK-INFO**
- 83dB
  - 18 -30 V AC/DC
  - Diameter 22,5 mm
  - 100% ED

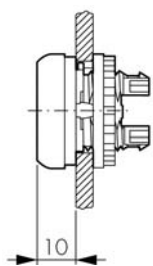
DESCRIPTION	ORDER NO.
Acoustic indicator, empty	MM229015
Buzzer, continuous tone, 24 V AC/DC	MM229025
Buzzer, pulse tone, 24 V AC/DC	MM229028

# CONTROL UNITS

## ILLUMINATED PUSHBUTTONS, FLUSH



MM216938



### SCHRACK-INFO

- IP 67, 69K
- Diameter 22,5 mm

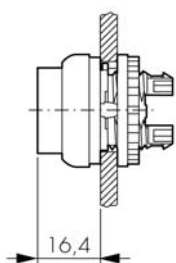
DESCRIPTION	ORDER NO.
<b>SPRING – RETURN</b>	
Spring – return, white	MM216922
Spring – return, red	MM216925
Spring – return, green	MM216927
Spring – return, yellow	MM216929
Spring – return, blue	MM216931
Spring – return, red "0"	MM216936
Spring – return, green "1"	MM216938
Spring – return, white "0"	MM216940
Spring – return, white "1"	MM216942
Spring – return, w/o plate	MM216933
<b>STAY – PUT</b>	
Stay – put, white	MM216944
Stay – put, red	MM216946
Stay – put, green	MM216948
Stay – put, yellow	MM216950
Stay – put, blue	MM216952
Stay – put, red "0"	MM216957
Stay – put, green "1"	MM216959
Stay – put, white "1"	MM216963
Stay – put, w/o plate	MM216954

# CONTROL UNITS

## ILLUMINATED PUSHBUTTONS, HIGH



MM216975



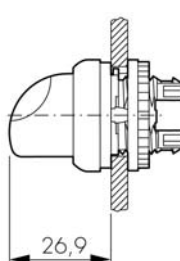
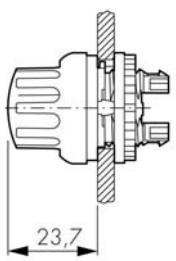
- SCHRACK-INFO**
- IP 67, 69K
  - Diameter 22,5 mm

DESCRIPTION	ORDER NO.
<b>SPRING – RETURN</b>	
High, spring – return, white	MM216965
High, spring – return, red	MM216967
High, spring – return, green	MM216969
High, spring – return, yellow	MM216971
High, spring – return, blue	MM216973
High, spring – return, red "0"	MM216975
High, spring – return, green "1"	MM216977
High, spring – return, white "1"	MM216981
<b>LENSES FOR ILLUMINATED PUSHBUTTONS</b>	
Lense, illuminated button f. red	MM216442
Lense, illuminated button f. green	MM216443
Lense, illuminated button f. yellow	MM216444
Lense, illuminated button f. blue	MM216445
Lense, illuminated button f. individual	MM216446

## SELECTOR SWITCHES



MM216865



- SCHRACK-INFO**
- IP 66
  - Diameter 22,5 mm
  - Stay – put: 60°
  - Spring – return: 40°

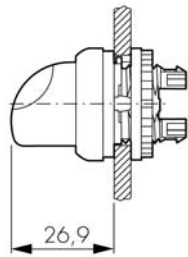
DESCRIPTION	ORDER NO.
<b>2 POSITIONS</b>	
2 positions, spring – return, 40°, thumb grip	MM216865
2 positions, stay – put, 60°, thumb grip	MM216867
2 positions, stay – put position, thumb grip	MM216874
2 positions, stay – put, black, 1-0, rotary head	MM216855
<b>3 POSITIONS</b>	
3 positions, spring – return, 40°, thumb grip	MM216870
3 positions, stay – put, 60°, thumb grip	MM216872
3 positions, stay – put, black, 1-0 II, rotary head	MM216863

# CONTROL UNITS

## ILLUMINATED SELECTOR SWITCHES



MM216845



### SCHRACK-INFO

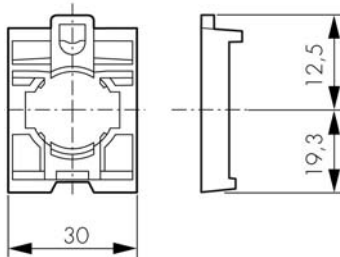
- IP 66
- Diameter 22,5 mm

DESCRIPTION	ORDER NO.
<b>2 POSITIONS, SPRING – RETURN</b>	
2 positions, spring – return, white	MM216812
2 positions, spring – return, red	MM216814
2 positions, spring – return, green	MM216816
2 positions, spring – return, yellow	MM216818
<b>2 POSITIONS, STAY – PUT</b>	
2 positions, stay – put, white	MM216823
2 positions, stay – put, red	MM216825
2 positions, stay – put, green	MM216827
2 positions, stay – put, yellow	MM216829
2 positions, stay – put, blue	MM216831
<b>3 POSITIONS, SPRING – RETURN</b>	
3 positions, spring – return, white	MM216833
3 positions, spring – return, red	MM216835
3 positions, spring – return, green	MM216837
3 positions, spring – return, blue	MM216841
<b>3 POSITIONS, STAY – PUT</b>	
3 positions, stay – put, white	MM216843
3 positions, stay – put, red	MM216845
3 positions, stay – put, green	MM216847
3 positions, stay – put, yellow	MM216849
3 positions, stay – put, blue	MM216851

## ADAPTER



MM216374



### SCHRACK-INFO

- For front mounting switching and LED elements
- The adapter is required for all control devices which are made up of individual parts. Up to 6 contacts or 1 LED plus a maximum of 4 contacts can be mounted.

DESCRIPTION	ORDER NO.
Adapter (front)	MM216374

## CONTROL UNITS

## SWITCHING ELEMENTS



MM216378

## SCHRACK-INFO

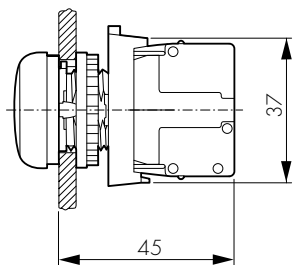
- Version front to mounting onto adaptor or  
Version floor for mounting in enclosure and on telescopic clip
- Cage clamp or screw terminals
- Breaking capacity: AC 15,230 V 6 A  
DC 13,24 V 3 A

DESCRIPTION	ORDER NO.
<b>SWITCH ELEMENT FOR FRONT MOUNTING</b>	
NO contact front	MM216376
NC contact front	MM216378
NO contact CC front	MM216384
NC contact CC front	MM216385
<b>SWITCH ELEMENT FOR FLOOR MOUNTING</b>	
NO contact floor	MM216380
NC contact floor	MM216382
NO contact CC floor	MM216386
NC contact CC floor	MM216387

## LEDS



MM216557



## SCHRACK-INFO

- 2 supply voltages: 12 -30 V AC/DC, 85-264 V AC
- Rated current: 12-30 V AC/DC: 8-15 mA, 85-264 V AC:  
5-15 mA (Pmax = 0,33 W)
- Diameter 22,5 mm

DESCRIPTION	ORDER NO.
<b>LED FOR FRONT MOUNTING</b>	
LED 12-30 V AC/DC white, front	MM216557
LED 12-30 V AC/DC red, front	MM216558
LED 12-30 V AC/DC green, front	MM216559
LED 12-30 V AC/DC, blue, front	MM218057
LED 12-30 V AC/DC white, front CC	MM216569
LED 12-30 V AC/DC red, front CC	MM216570
LED 12-30 V AC/DC green, front CC	MM216571
LED 12-30 V AC/DC, blue, front CC	MM218061
LED 85-264 V AC white, front	MM216563
LED 85-264 V AC red, front	MM216564
LED 85-264 V AC green, front	MM216565
LED 85-264 V AC/DC, blue, front	MM218059
LED 85-264 V AC white, front CC	MM216575
LED 85-264 V AC red, front CC	MM216576
LED 85-264 V AC green, front CC	MM216577
LED 85-264 V AC/DC, blue, front CC	MM218063

# CONTROL UNITS

## LEDS – continued

DESCRIPTION	ORDER NO.
<b>LED FOR FLOOR MOUNTING</b>	
LED 12-30 V AC/DC white, floor	MM216560
LED 12-30 V AC/DC red, floor	MM216561
LED 12-30 V AC/DC green, floor	MM216562
LED 12-30 V AC/DC, blue, floor	MM218058
LED 12-30 V AC/DC white, floor CC	MM216572
LED 12-30 V AC/DC green, floor CC	MM216574
LED 12-30 V AC/DC red, floor CC	MM216573
LED 85-264 V AC white, floor	MM216566
LED 85-264 V AC red, floor	MM216567
LED 85-264 V AC green, floor	MM216568
LED 85-264 V AC red, floor CC	MM216579
LED 85-264 V AC white, floor CC	MM216578
<b>LED ACCESSORIES</b>	
LED test module 12-30 V AC/DC	MM231079
LED test module 85-264 V AC/DC	MM231080
LED test module 85-264 V AC/DC	MM213080
LED test module 12-30 V AC/DC	MM213079

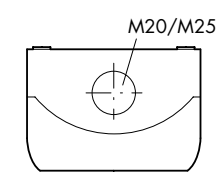
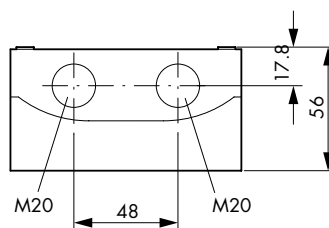
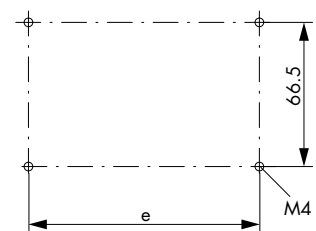
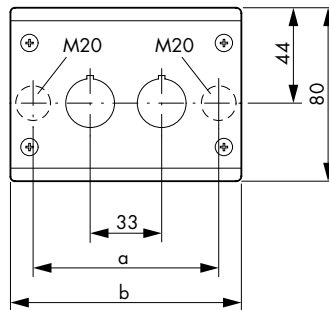
## SURFACE ENCLOSURE



MM216536



MM216538



### SCHRACK-INFO

- Diameter 22,5 mm

Type	Mounting positions	a	b	e	Conductor insertions
M22-I (Y)	1	172	42,6	58,5	2 x M16 3 x M20 2 x M25
M22-I2	2	120	85,6	106,5	2 x M20 3 x M20 2 x M25
M22-I3	3	153	118,6	139,5	2 x M20 2 x M25 4 x M20
M22-I4	4	186	151,6	172,5	2 x M20 2 x M25 4 x M40
M22-I6	6	252	217,6	238,5	2 x M20 2 x M25 4 x M20

DESCRIPTION	ORDER NO.
Surface enclosure 1 black/light grey	MM216535
Surface enclosure 1 black/yellow	MM216536
Surface enclosure 2 black/light grey	MM216537
Surface enclosure 3 black/light grey	MM216538
Surface enclosure 4 black/light grey	MM216539
Surface enclosure 6 black/light grey	MM216540

# CONTROL UNITS

## ALL-IN-ONE UNITS



MM216529



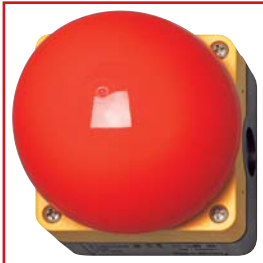
MM216525

### SCHRACK-INFO

- Diameter 22,5 mm
- Design: Insulation enclosure IP 67
- Surface- and panel units delivered pre-assembled.

DESCRIPTION	ORDER NO.
All-in-one surface buttons, 2x "0", "1"	MM216529
All-in-one surface buttons, 3x "0", "1", "3"	MM216532
All-in-one emergency stop mushroom button, 1 N/O, 1 N/C	MM216525
All-in-one emergency stop mushroom button, 1 N/C	MM216524
All-in-one surface buttons, green "1"	MM216522
All-in-one surface buttons, red "0"	MM216521
All-in-one emergency stop button, 1 N/C for insertion	MM216515
All-in-one emergency stop mushroom button, 1 N/O, 1 N/C	MM216516

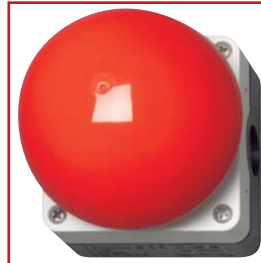
## FOOT AND PALM SWITCHES



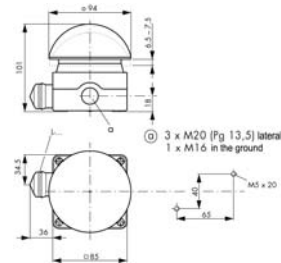
MM229746



MM229747



MM229749



### SCHRACK-INFO

- IP 67/ IP 69K
- N/C with safety function through positive opening operation meeting IEC 947-5-1
- Large robust impact surface
- Emergency stop provides tamper-proof operation in accordance with ISO 13 850/EN 418

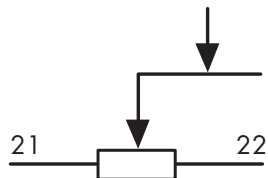
DESCRIPTION	ORDER NO.
Coarse manual switch, black, 1 N/O, 1 N/C, momentary	MM229749
Coarse manual switch, red, 1 N/O, 1 N/C, momentary	MM229746
Emergency stop button, 1 N/C, momentary	MM229747
Emergency stop button, 1 N/C, 1 N/O, momentary	MM229748

# CONTROL UNITS

## POTENTIOMETER



MM229491



### SCHRACK-INFO

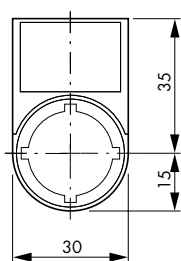
- Complete with potentiometer
- From 1 kΩ to 470 kΩ
- 3 connectors lead out separately
- Degree of protection IP 65
- Fully insulated
- Pmax = 0,5 W

DESCRIPTION	ORDER NO.
Potentiometer 1 kΩ	MM229489
Potentiometer 4.7 kΩ	MM229490
Potentiometer 10 kΩ	MM229491
Potentiometer 470 kΩ	MM229494

## LABELS



MM216480



DESCRIPTION	ORDER NO.
Emergency stop label Ø=60 mm 4-languages	MM216483
Emergency stop label, 33x50 mm	MM216472
Emergency stop label, 50x50 mm	MM216484
Emergency stop label, Ø=90 mm plain	MM216464
Emergency stop label Ø=90 mm 4 languages	MM216465
Label holder, blank, 30x50 mm	MM216392
Label holder f. double-pushbuttons, blank, 30x75 mm	MM216394
Label, 18x27 mm alu blank	MM216480
Label + holder 30x50 mm 0 I	MM216485
Label + holder 30x50 mm I 0 II	MM216486
Label + holder 30x50 mm Stop	MM216494
Label + holder 30x50 mm Start	MM216495
Label + holder 30x50 mm ON	MM216496
Label + holder 30x50 mm OFF ON	MM216499
Label + holder MAN. 0 AUTO	MM216501
Label + holder 30x50 mm OFF	MM218300

## CONTROL UNITS

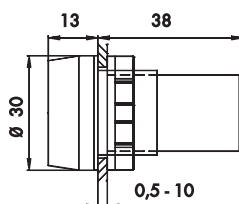
### COMPACT INDICATOR LIGHT



BZ501210ME



BZ501219ME



### SCHRACK-INFO

- Colour range: green, red, blue, yellow, white
- Voltage range: 20 - 30 V AC/DC  
170 - 250 V AC, 50 Hz
- Flash rate: 100 Hz for all voltage ranges
- Temperature range: -25 to +55° C
- Diameter: 22 mm
- Degree of protection: IP 65

### CERTIFICATIONS

EN 60947, IEC 947

### MULTI CHIP LED

Several LED chips are integrated in the surface of the lamp. Through multichip LED technology, we can offer an even, colour-intensive light distribution, which is easy to see even in bright conditions. Not to mention the well-known long service life of LEDs.

DESCRIPTION	DIAMETER	ORDER NO.
Compact LED red 20-30 V AC/DC	Ø22	BZ501210ME
Compact LED yellow 20-30 V AC/DC	Ø22	BZ501211ME
Compact LED blue 20-30 V AC/DC	Ø22	BZ501212ME
Compact LED green 20-30 V AC/DC	Ø22	BZ501213ME
Compact LED white 20-30 V AC/DC	Ø22	BZ501214ME
Compact LED red 170-250 V AC/DC	Ø22	BZ501215ME
Compact LED yellow 170-250 V AC/DC	Ø22	BZ501216ME
Compact LED blue 170-250 V AC/DC	Ø22	BZ501217ME
Compact LED green 170-250 V AC/DC	Ø22	BZ501218ME
Compact LED white 170-250 V AC	Ø22	BZ501219ME

# SWITCH DISCONNECTORS & CAM SWITCHES

## LOAD-BREAK SWITCHES & CAM SWITCHES – GENERAL INFORMATIONS



MAIN-, LOAD-BREAK-, CAM- SWITCHES

### MAIN SWITCHES AND MAIN SWITCHES WITH EMERGENCY STOP

In accordance with the standards IEC/EN 60204/ VDE0113, all production machines and machine tool must be equipped with a main switch, which disconnects all electrical equipment from all active mains connections during cleaning, maintenance and repair work and during longer downtimes.

Where 2 or more main switches are required, suitable protective interlocking devices must be used. However, we recommend the use of a 4 pole main switch (cam switch).

The main switch must be of one of the following types:

- Load-break switch which meets IEC/EN 60947-3 and VDE 0660 part 107 for application categories AC23-B or DC-23B.
- Disconnecter with auxillary contact (e.g. A3-10 switching program), which ensures at all times that the switch devices can break the load before the main contacts of the disconnecter are opened.
- The breaking capacity must be break at the same time the current of the largest motor at stall, together with the sum of the currents of all other motors and/or load circuits.

### LT LOAD-BREAK SWITCH.. 20 – 160 A

Load-break switches can be used anywhere where compact ON-OFF switches with large contact gaps (isolators) and a high contact pressure, and where a greater short circuit protection is required. They are thus used as main switches in accordance with IEC/EN 60204/ VDE 0113 incl. locking device, terminal cover and forced-switching contactors.

Disconnectors according to IEC/EN 60947-3 & VDE 0660 part 107 with switching-position-indicators for 690 V.

3-pole or 4-pole motor switch. In accordance with IEC/EN 60947-3 / VDE 0660 part 107, these LT range switches have a high AC3 & AC23A switching capacity.

### CAM SWITCHES, 10 – 250 A

Cam switches can be used for practically any purpose, as motor switches, main switches, control switches or instrument switches for example. Alongside the list of switching programs, a practically endless list of special switching programmes can also be used.

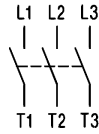
SCHRACK cam switches are modular, operate with double disconnection per pole and two contacts per switch cell. Using a variety of models, additional devices and various handles and front frames, they can be used in almost endless combinations. The switches of all types are made up of a locating mechanism and a switch kit. The cams are driven by a stabile, torsionally rigid aluminium shaft. The locating mechanism determines the switching angle and the number of positions. Switches of all sizes and designs can in theory also be designed with 90°-, 60°-, 45°- and 30° switching angles.

# SWITCH DISCONNECTORS & CAM SWITCHES

## LT LOAD-BREAK SWITCHES



IN8E2333



### SCHRACK-INFO

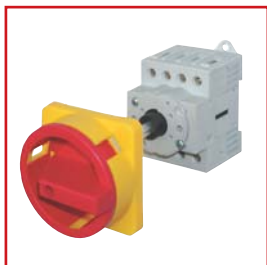
Their ideal performance characteristics enable main switches to be used as main switches, emergency stop-, repair- & safety switches.

### TECHNICAL DATA

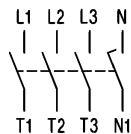
- Main switch, 3-pole
- 20 - 160 A / 3 x 400 VAC
- Ampere meets AC21 690 V; capacity AC23 3 x 400 V
- VBG 4 terminals
- Meets EN 60204, VDE 0113 standards
- Max. cable cross-section: 20 – 40 A: 10 mm<sup>2</sup>  
63 A, 80A: 25 mm<sup>2</sup>  
80 A, 100A: 50 mm<sup>2</sup>
- Front-side degree of protection: IP 66
- Switch: IP 2x
- 4-bore mounting (Built-in, red handle, yellow front frame, lockable)

DESCRIPTION/RATED CURRENT/SWITCHING CAPACITY	DIM. (WxHxD) mm	FRONTPLATE DIM. (WxHxD) mm	ORDER NO.
Load break switch 3-pole/20 A/5.5 kW	48x64x54	64x64	IN8E2332
Load break switch 3-pole/25 A/7.5 kW	48x64x54	64x64	IN8E2333
Load break switch 3-pole/32 A/11 kW	48x64x54	64x64	IN8E2334
Load break switch 3-pole/40 A/15 kW	48x64x54	64x64	IN8E2335
Load break switch 3-pole/63 A/22 kW	48x64x54	64x64	IN8E2337
Load break switch 3-pole/80 A/22 kW	48x64x54	64x64	IN8E2338
Load break switch 3-pole/80 A/30 kW	70x80x71	64x64	IN805780
Load break switch 3-pole/100 A/37 kW	70x80x71	64x64	IN805781

## FLOOR MOUNTING WITH DOOR-COUPLING, LOCKING DEVICE FOR 4-HOLE FASTENING



IN8A2435



### SCHRACK-INFO

- Emergency-stop switch, 4-pole
- Installation depth can be subsequently adjusted up to a length of 190 mm
- Frontside degree of protection IP 66

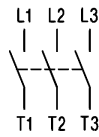
DESCRIPTION/RATED CURRENT/SWITCHING CAPACITY	DIM. (WxHxD) mm	FRONTPLATE DIM. (WxHxD) mm	ORDER NO.
Emergency stop main switch 4-pole/40 A/15 KW	48x64x...	64x64	IN8A2435
Emergency stop main switch 4-pole/63 A/22 kW	62.5x64x...	64x64	IN8A2437

# EMERGENCY-STOP MAIN SWITCHES

## MODULAR, RED HANDLE, YELLOW FRONT FRAME, LOCKABLE



IN8R2322



### SCHRACK-INFO

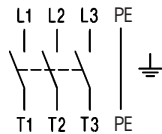
- Emergency-stop switch, 3-pole
- Frontside degree of protection IP 40
- For up to a max of 2 padlocks

DESCRIPTION/RATED CURRENT/SWITCHING CAPACITY	DIM. (WxHxD) mm	ORDER NO.
Emergency-stop main switch, 3-pole, Modular/20 A/5.5 kW	48x64x60	IN8R2322
Emergency-stop main switch, 3-pole, Modular/25 A/7.5 kW	48x64x60	IN8R2323
Emergency-stop main switch, 3-pole, Modular/32 A/11 kW	48x64x60	IN8R2324
Emergency-stop main switch, 3-pole, Modular/40 A/15 kW	48x64x60	IN8R2325
Emergency-stop main switch, 3-pole, Modular/63 A/22 kW	48x64x60	IN8R2327
Emergency-stop main switch, 3-pole, Modular/80 A/22 kW	48x64x60	IN8R2328
Emergency-stop main switch, 3-pole, Modular/80 A/30 kW	70x80x70	IN885780
Emergency-stop main switch, 3-pole, Modular/100 A/45 kW	70x80x70	IN885781

## REPAIR SWITCHES, INSULATION-ENCLOSED, RED HANDLE, LOCKABLE, IP65



IN8P2332



### SCHRACK-INFO

- Main switch, 3/4-pole
- For up to a max of 3 padlocks
- Integrated PE rail
- Degree of protection IP 65

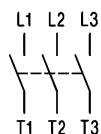
DESCRIPTION/RATED CURRENT/SWITCHING CAPACITY	DIM. (WxHxD) mm	ORDER NO.
Emergency stop main switch 3-pole/20 A/5.5 kW	98x130x77	IN8P2332
Emergency stop main switch 3-pole/25 A/7.5 kW	98x130x77	IN8P2333
Emergency stop main switch 3-pole/32 A/11 kW	98x130x77	IN8P2334
Emergency stop main switch 3-pole/80 A/22 kW	120x200x86	IN8P2338
Emergency stop main switch 4-pole/32 A/11 kW	98x130x77	IN8P2434

# MAIN SWITCHES

## MAIN SWITCHES



IN8E1332



### SCHRACK-INFO

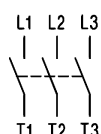
- Main switch for installation, 4-hole mounting
- Lockable with a max. of 3 padlocks
- Frontside degree of protection: IP 66

DESCRIPTION/RATED CURRENT/SWITCHING CAPACITY	DIM. (WxHxD) mm	FRONTPLATE DIM. (WxHxD) mm	ORDER NO.
Main switch 3-pole/20 A/5.5 kW	48x64x54	64x64	IN8E1332
Main switch 3-pole/25 A/7.5 kW	48x64x54	64x64	IN8E1333
Main switch 3-pole/32 A/11 kW	48x64x54	64x64	IN8E1334
Main switch 3-pole/40 A/15 kW	48x64x54	64x64	IN8E1335
Main switch 3-pole/63 A/22 kW	48x64x54	64x64	IN8E1337
Main switch 3-pole/80 A/22 kW	48x64x54	64x64	IN8E1338
Main switch 3-pole/100 A/37 kW	70x80x71	64x64	IN805881

## MODULAR, BLACK HANDLE, LOCKABLE



IN8R1322



### SCHRACK-INFO

- Frontside degree of protection: IP 40
- Lockable with a max. of 2 padlocks

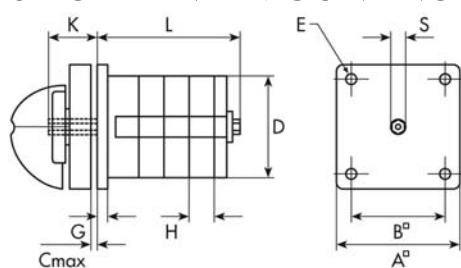
DESCRIPTION/RATED CURRENT/SWITCHING CAPACITY	DIM. (WxHxD) mm	ORDER NO.
Main switch 3-pole/20 A/5.5 kW	48x64x60	IN8R1322
Main switch 3-pole/25 A/7.5 kW	48x64x60	IN8R1323
Main switch 3-pole/32 A/11 kW	48x64x60	IN8R1324
Main switch 3-pole/40 A/15 kW	48x64x60	IN8R1325
Main switch 3-pole/63 A/22 kW	48x64x60	IN8R1327
Main switch 3-pole/80 A/22 kW	48x64x60	IN8R1328
Main switch 3-pole/80 A/30 kW	70x80x70	IN885880
Main switch 3-pole/100 A/37 kW	70x80x70	IN885881

# CAM SWITCHES FOR PANEL MOUNTING

## CAM SWITCHES FOR PANEL MOUNTING – GENERAL INFORMATIONS



IN005120



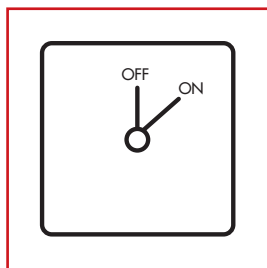
### SCHRACK-INFO

- Front-mounted
- Switching capacity: AC 3 up to 15 kW
- Rated current: 20 A to 50 A
- Frontside degree of protection: IP 65

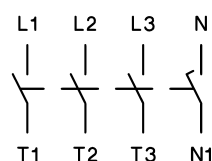
Typ	A	B	C	D	D1	D2	D3	E	G	H	K	S
M10H	48	36	5	2 <sup>1)</sup>	4,5	8 <sup>1)</sup>	-	4	3,5	9,5	19	SW5

Dimension L for switch cells												
Typ	1	2	3	4	5	6	7	8	9	10	11	12
M10H	36,5	46	55,5	65	74,5	84	93,5	103	112,5	122	131,5	141

## ON-OFF SWITCH

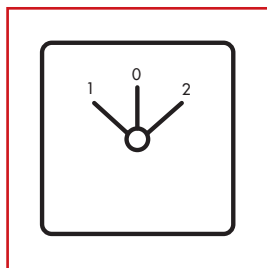


IN005120

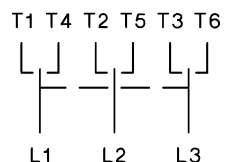


DESCRIPTION		DIM. (WxHxD) mm	NO. OF CELLS	ORDER NO.
1-pole/20 A	0-1	48x58x36,5	1	IN005120
2-pole/20 A	0-1	48x58x46	1	IN005220
3-pole/20 A/AC3 5.5	0-1	48x58x55,5	2	IN005320
1-pole/20 A/ON-OFF		48x58x36,5	1	IN005121
1-pole/20 A/with key switch	0-1	48x58x36,5	1	IN005122

## CHANGEOVER SWITCH WITH ZERO POSITION



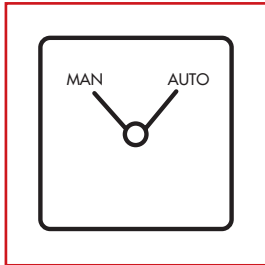
IN006120



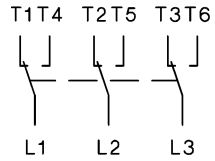
DESCRIPTION		DIM. (WxHxD) mm	NO. OF CELLS	ORDER NO.
1-pole/20 A	1-0-2	48x58x36,5	1	IN006120
2-pole/20 A	1-0-2	48x58x46	2	IN006220
3-pole/20 A/AC 3 5.5 kW	1-0-2	48x58x55,5	3	IN006320
1-pole/20 A	MAN-OFF-AUTO	48x58x36,5	1	IN006121
2-pole/20 A	MAN-OFF-AUTO	48x58x46	2	IN006221

# CAM SWITCHES FOR PANEL MOUNTING

## CHANGEOVER SWITCH WITHOUT ZERO POSITION

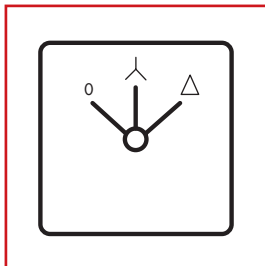


IN007121

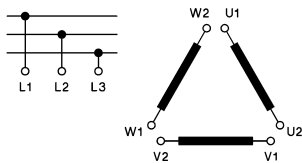


DESCRIPTION	DIM. (WxHxD) mm	NO. OF CELLS	ORDER NO.
1-pole/20 A/AC 3 5.5 kW, AC 23 7.5 kW; MAN/AUTO	48x58x36,5	1	IN007121
1-pole/20 A/1-2	48x58x36,5	1	IN007122

## STAR DELTA SWITCH

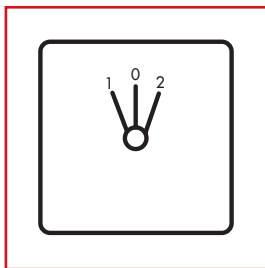


IN108900



DESCRIPTION	DIM. (WxHxD) mm	NO. OF CELLS	ORDER NO.
Star delta switch, AC 21 32 A/15 kW	48x58x65	3	IN108900

## CHANGEOVER SWITCH WITH SPRING RETURN

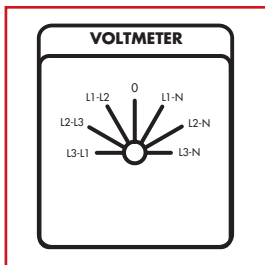


IN004120

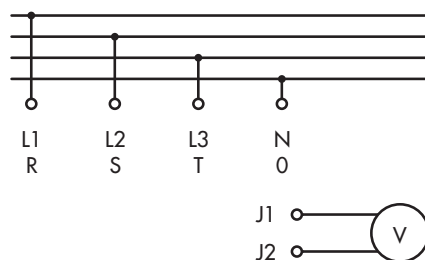


DESCRIPTION	DIM. (WxHxD) mm	NO. OF CELLS	ORDER NO.
Changeover switch with spring return, AC 21 20 A	48x58x36,5	1	IN004120

## VOLTMETER SWITCH



IN009V00



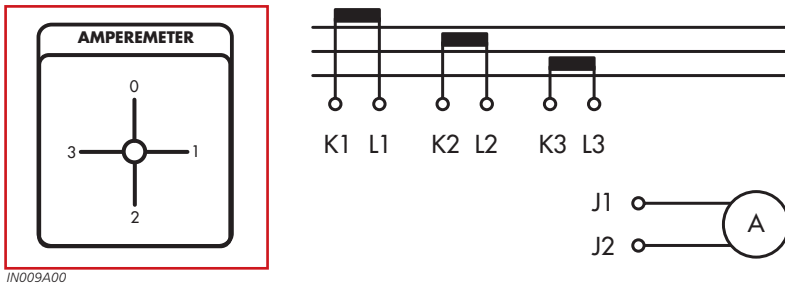
### SCHRACK-INFO

3 line-to-line, 3 phase voltages

DESCRIPTION	DIM. (WxHxD) mm	NO. OF CELLS	ORDER NO.
Line-to-line & phase voltages, 1-pole/20 A	48x58x36,5	3	IN009V00

# CAM SWITCHES FOR PANEL MOUNTING

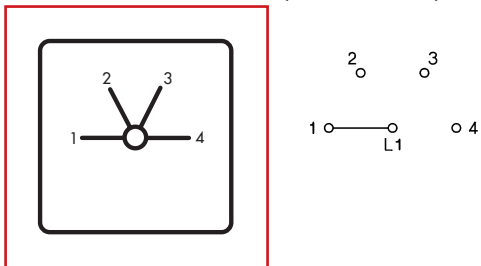
## AMMETER SWITCHES



IN009A00

DESCRIPTION/RATED CURRENT	DIM. (WxHxD) mm	NO. OF CELLS	ORDER NO.
Ammeter switch for 3 current transformer circuits, 1-pole/20 A	48x58x36,5	3	IN009A00

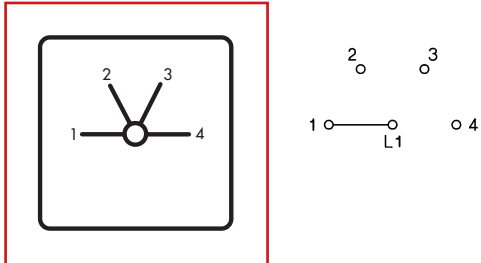
## STEP SWITCH, 1-POLE, WITHOUT 0 POSITION



IN003122

DESCRIPTION/RATED CURRENT	DIM. (WxHxD) mm	NO. OF CELLS	ORDER NO.
3-step switch/20 A	48x58x44	2	IN003121
4-step switch/20 A	48x58x44	2	IN003122

## STEP SWITCH, 2-POLE, WITHOUT 0 POSITION



IN003123

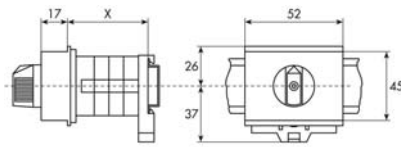
DESCRIPTION/RATED CURRENT	DIM. (WxHxD) mm	NO. OF CELLS	ORDER NO.
3-step switch/20 A	48x58x44	3	IN003123
4-step switch/20 A	48x58x44	4	IN003124

# CAM SWITCHES FOR DIN-RAIL

## CAM SWITCH FOR DIN-RAIL – GENERAL INFORMATION



IN085220

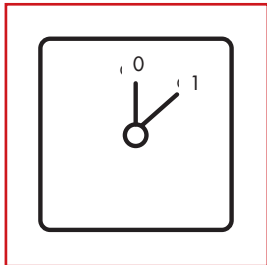


Switch cells for max X			
Typ	46	61	70
M10H	2	3	4

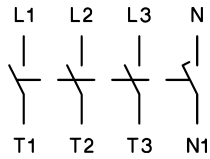
### SCHRACK-INFO

- Switching capacity: up to 11 kW
- Rated current: up to 32 A
- Degree of protection: IP 40

## ON-OFF SWITCH

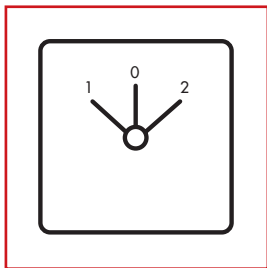


IN085120

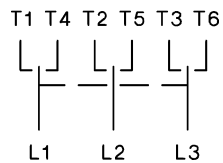


DESCRIPTION	DIM. (WxHxD) mm	ORDER NO.
1-pole/20 A	52x45x60	IN085120
2-pole/20 A	52x45x60	IN085220
3-pole/20 A/5.5 kW	52x45x60	IN085320

## CHANGEOVER SWITCH WITH ZERO POSITION



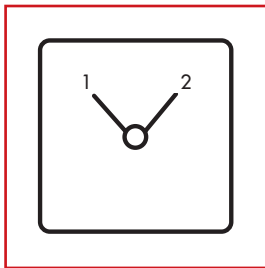
IN086120



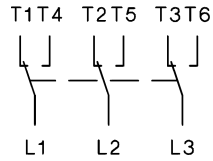
DESCRIPTION	DIM. (WxHxD) mm	ORDER NO.
1-pole/20 A 1-0-2	52x45x60	IN086120
2-pole/20 A 1-0-2	52x45x60	IN086220
3-pole/20 A 1-0-2	52x45x60	IN086320
1-pole /20 A MAN-0-AUTO	52x45x60	IN086122

# CAM SWITCHES FOR DIN-RAIL

## CHANGEOVER SWITCH WITHOUT ZERO POSITION

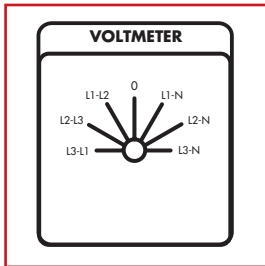


IN087120

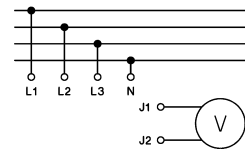


DESCRIPTION	DIM. (WxHxD) mm	ORDER NO.
1-pole/20 A	52x45x60	IN087120
2-pole/20 A	52x45x60	IN087220
3-pole/20 A	52x45x60	IN087320

## VOLTMETER SWITCH

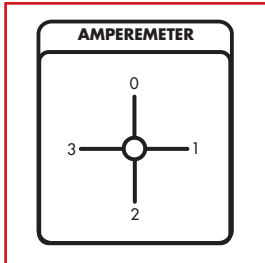


IN009V01

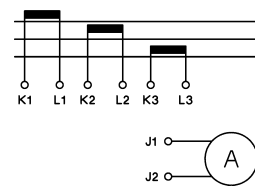


DESCRIPTION/RATED CURRENT	DIM. (WxHxD) mm	ORDER NO.
Line-to-line and phase voltages, 1-pole/20 A	52x45x60	IN009V01

## AMMETER SWITCHES



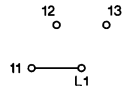
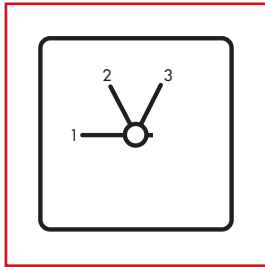
IN009A01



DESCRIPTION/RATED CURRENT	DIM. (WxHxD) mm	ORDER NO.
Ammeter switch for 3 current transformer circuits, 1-pole/20 A	52x45x60	IN009A01

## CAM SWITCHES FOR DIN-RAIL

### STEP SWITCH, 2-POLE, WITHOUT ZERO POSITION



IN083121

DESCRIPTION/RATED CURRENT	DIM. (WxHxD) mm	ORDER NO.
3-step switch/20 A	52x52x60	IN083121

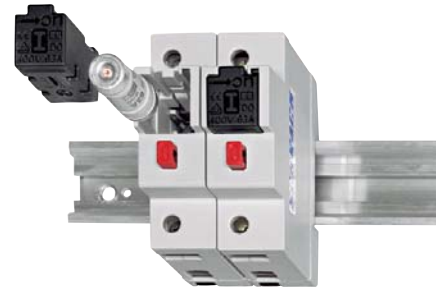
# FUSE MATERIAL

## TOP-TECHNIC



FUSE DISCONNECTORS FOR CYLINDRICAL FUSE-LINKS

## TOP-TECHNIC



PANEL-MOUNTING FUSE BASE

## TOP-TECHNIC



FUSE LOADBREAK DISCONNECTORS CORON

## TOP-TECHNIC



FUSE LOADBREAK DISCONNECTORS TYTAN-II

## TOP-TECHNIC



HRC FUSE ELEMENTS

## TOP-TECHNIC



60mm BUSBAR SYSTEM